

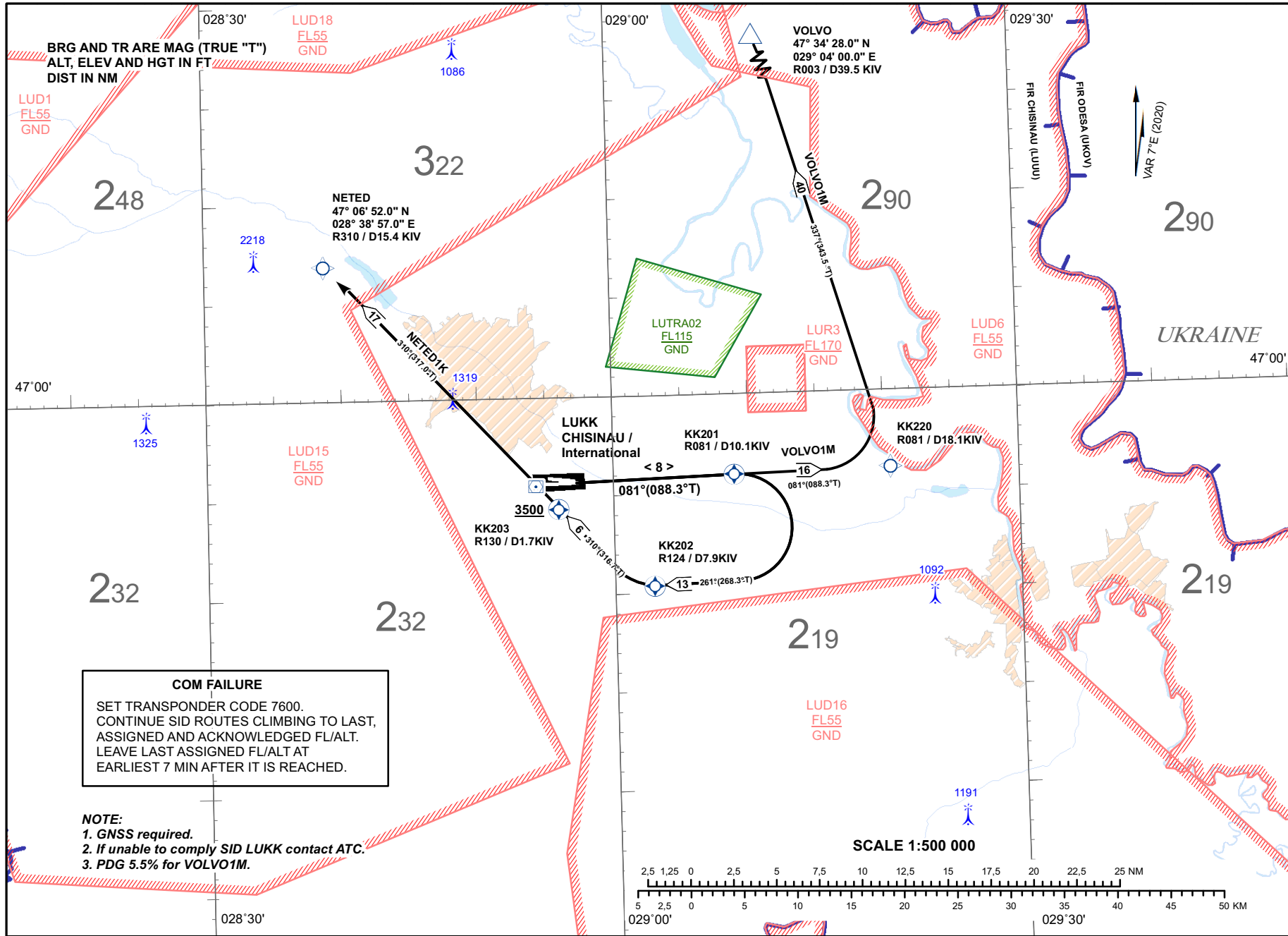
RNAV(GNSS), VOR/DME OVERLAY STANDARD DEPARTURE CHART - INSTRUMENT (SID) - ICAO

TRANSITION
ALTITUDE 4000FT

CONTROL: 128.975 MHz
APPROACH: 133.300 MHz
TWR: 118.100 MHz

CHISINAU/Int'l (LUKK)
RWY 08

NETED1K
VOLVO1M



Changes: **New SID.**

22 APR 2021

Moldavian Air Traffic Services Authority

AIRAC AMDT 002/2021

RNAV(GNSS), VOR/DME OVERLAY
STANDARD INSTRUMENT
DEPARTURE (SID) - ICAO

CHISINAU/Intl (LUKK)
RWY 08

Procedure Coding Table

Path Terminator	Waypoint			Course/Track MAG (True)	Dist NM	Turn Direction	Constraints		Navigation Specification	Remarks
	Identifier	Flyover	Coordinates				Level	Speed (kt IAS)		
NETED1K										
CF	KK201	Yes	465555.5N 0290856.3E	081 (088.3)	8.0	-	-	-	RNAV 1	Turn at KK201 is calculated with bank 20° and speed 240kt IAS
DF	KK202	Yes	465023.2N 0290253.6E	261 (268.3)	12.8	R	-	-		
DF	KK203	Yes	465421.7N 0285555.4E	310 (316.7)	6.4	R	+3500FT	-		
TF	NETED	No	470652.0N 0283857.0E	310 (317.0)	17.1	-	+FL95	-		
VOLVO1M										
CF	KK220	No	465608.0N 0292036.5E	081 (088.3)	16.0	-	+FL55	-	RNAV 1	Turn at KK220 is calculated with bank 25°
TF	VOLVO	No	473428.0N 0290400.0E	337 (343.5)	40.0	L	+FL90	-		